



MOTION SCANNING TECHNOLOGY
TRUE MIXED 755 & 808 NM
FOR PAINLESS HAIR REMOVAL





The VeLux logo features a stylized white leaf-like symbol to the left of the brand name 'VeLux' in a white, sans-serif font. The logo is set against a horizontal rectangular background with a color gradient from red on the left to blue on the right.

VeLux creates the optimal permanent hair removal solution by combining two effective laser wavelengths of 755nm & 808nm based on motion scanning technology. Its motion scanning technology with adjustable 50x15mm large spot size enables to provide safe, high speed, comfortable hair treatment without the use of anesthetics or gels for both large and small areas.

Why  is the optimal solution for fast and painless hair removal

Motion Scanning Technology

High density of 2,400watt/cm²
150ms ~ Up to 3ms

Pain Control by Scanning motion program
No anesthetics and no gel
No consumable

True Mixed Dual Wavelengths

Completely mixed laser of 755 & 808nm
Suitable for **all skin and hair types**
Effective for **light colored & fine hair**



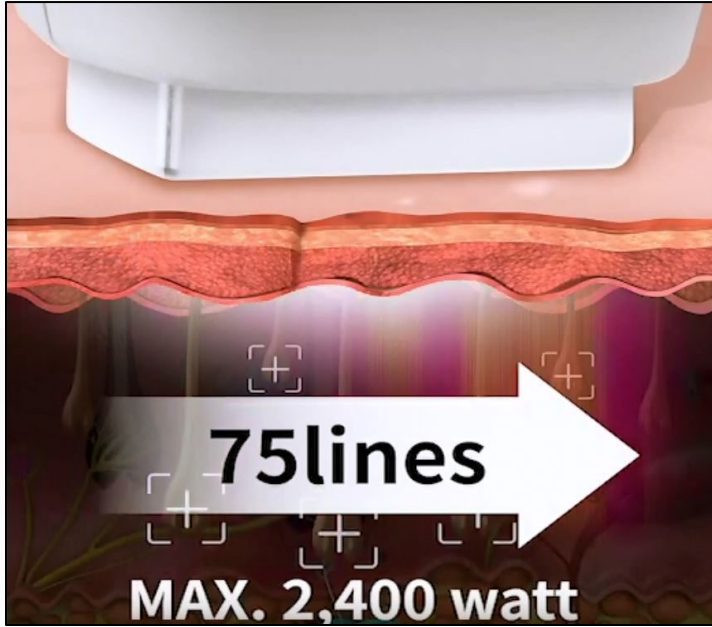
Bigger Spot Size

High Fluence of **Large spot (50 by 15mm)**
Adjustable spot size by 10mm
Fast hair treatment for large areas

3 Cooling Functions, all in ONE

Sapphire contact cooling for pre-cooling
Smart Target Motion during laser radiation
Extra air cooling adaptor for sensitive skin

Motion Scanning Technology ; High Fluence in short pulse duration up to 3ms



Motion Scanning Technology

Motion Scanning Technology is the revolutionary method for the fast hair removal treatment effectively scanning across a large area of 50 by 15mm in approximately 0.5-1.5sec.

High power density of 2,400watt/cm²
High fluence (max 100J/cm²) in short pulse duration up to 3ms
Fast treatment back treatment less 8mins

←Please click the move clip for its animation

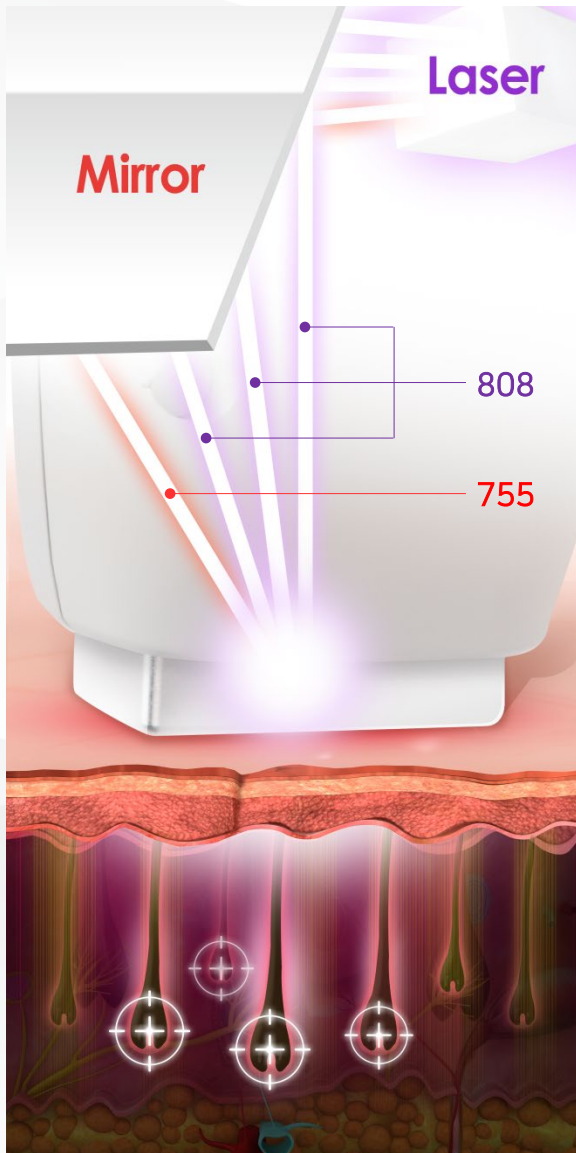
Smart Target Motion

Smart Target Motion will be able to effectively control the pain degree during treatment by delivering the energy into 5 different areas in random order . It will make the treatment extremely well tolerated during treatment without the use of anesthetics or gels.

Please click the move clip for its animation →



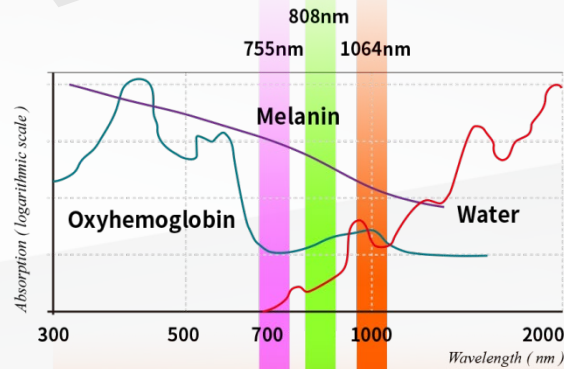
True Mixed Dual Waves of 755 & 808nm



Completely mixed laser of 755 & 808nm

Unlike the other multi-wavelength devices, the focused 2 most effective wavelengths radiate simultaneously and target each hair follicles at different depth for effective and fast hair removal treatment.

Benefits of Dual Wavelengths



Full advantages of deep penetration and high energy absorption rate from 808 and 755nm

Wide range of safe treatment coverage for all skin and hair types even light colored and thin hair

Epidermis

Dermis

Dermal vessels

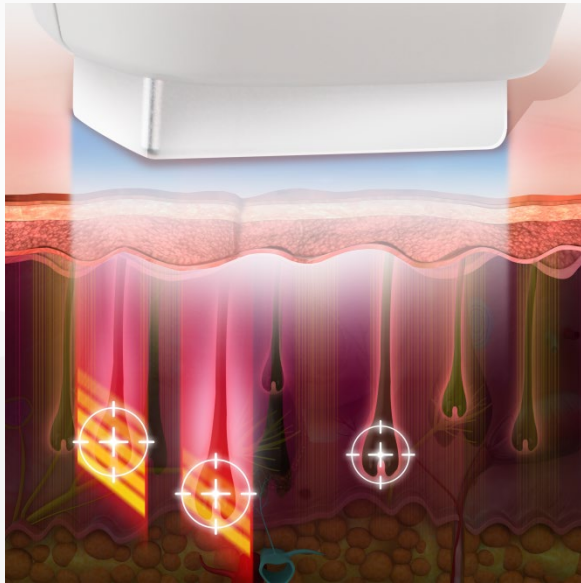
Subcutaneous fat

3 Cooling Functions, all in ONE

Powerful Cooling and Comfort

Combination of the powerful sapphire tip contact cooling and motion scanning technology for painless treatment without anesthetics and gels

An extra air cooling adaptor or smart target motion for improved comfort during treatment



Contact cooling



Contact Cooling plus Extra Air Cooling



Motion scanning method makes scanned area cool down

50 by 15mm of adjustable Biggest spot



High Speed and Flexibility

large spot size for fast hair treatment combining its motion scanning technology

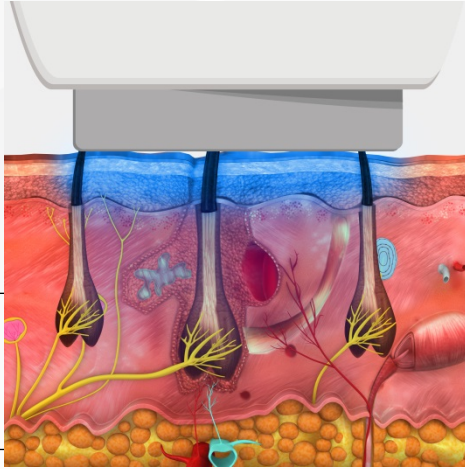
5 step adjustable spot sizes from 50 to 10mm for easy & simple application targeting to treat both large and small areas

Unique magnetic connectable facial tip for narrow areas of 10 by 15mm

HOW DOES MTS WORK?

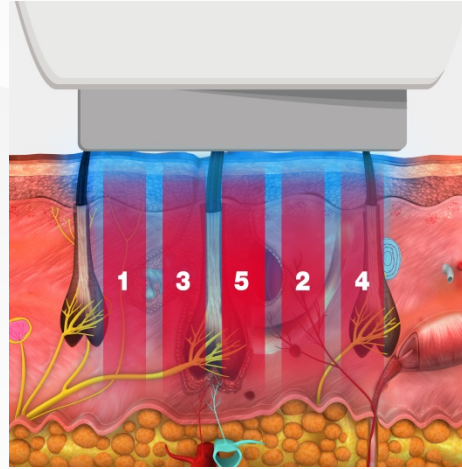
1

Skin is cooled before and throughout the treatment



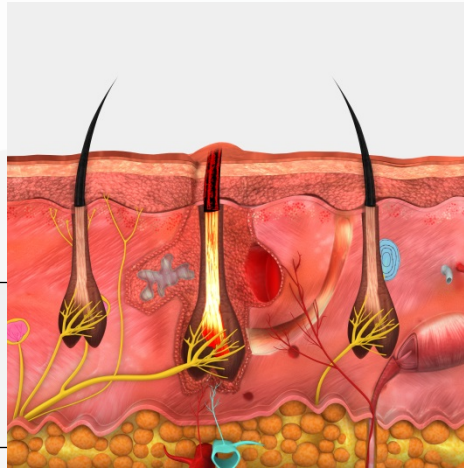
2

Dual waves focus into single laser beam scanning and reaching into the hair follicle



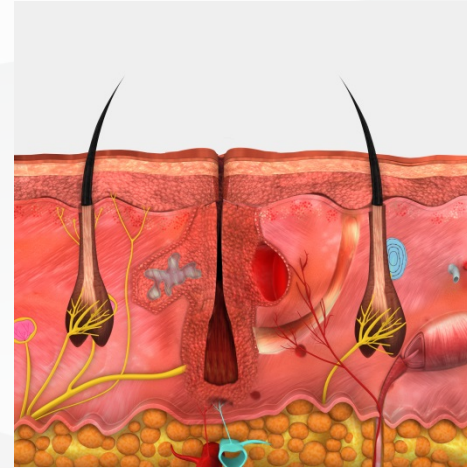
3

Mild erythema and edema might occur on the treated areas



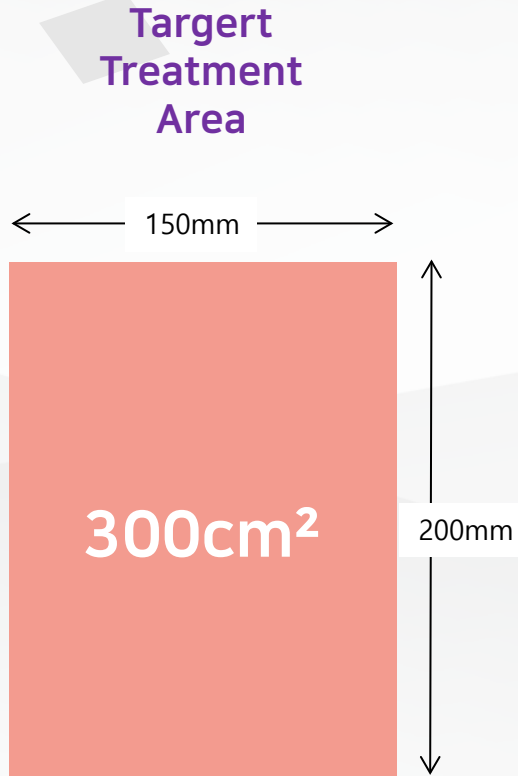
4

Hair will start to disappear naturally



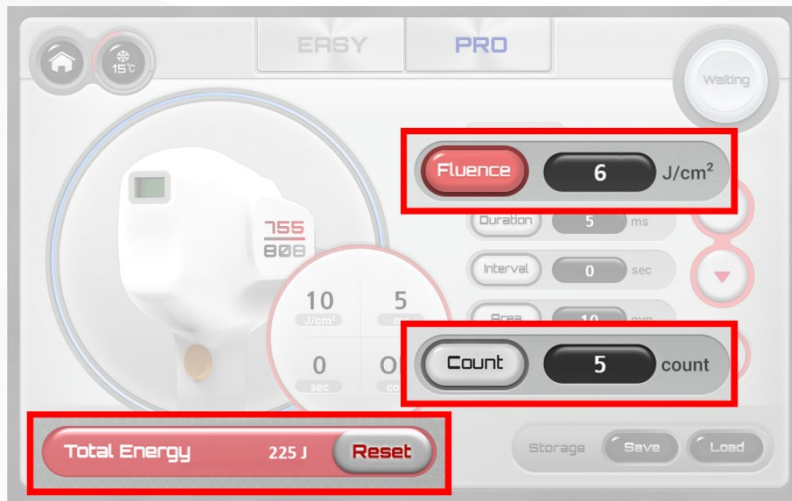
FASTER HAIR REMOVAL TREATMENTS THAN EVER

Total Treatment time, Less than 80 sec for Target Treatment Area



MODEL		Remark
Velux-755 plus 808		
240 watt		Power per line
SPOT SIZE		
15 by 50mm (7.5cm ²)		
POWER DENSITY		
2,400 watt / cm ²		Total 75 lines in one shot
PULSE DURATION PER ONE SHOT	30J/cm ²	
	40J/cm ²	
TOTAL NUMBER OF SHOTS FOR 300cm ²		
40 shots		300cm ² /7.5cm ²
TOTAL TREATMENT TIME FOR 300cm ²	30J/cm ²	Time interval for new position each shot: 0.5s
	40J/cm ²	Total 19,500ms (0.5 x 39 shots)
62,500ms (62.5 sec)		
76,100ms (76.1 sec)		

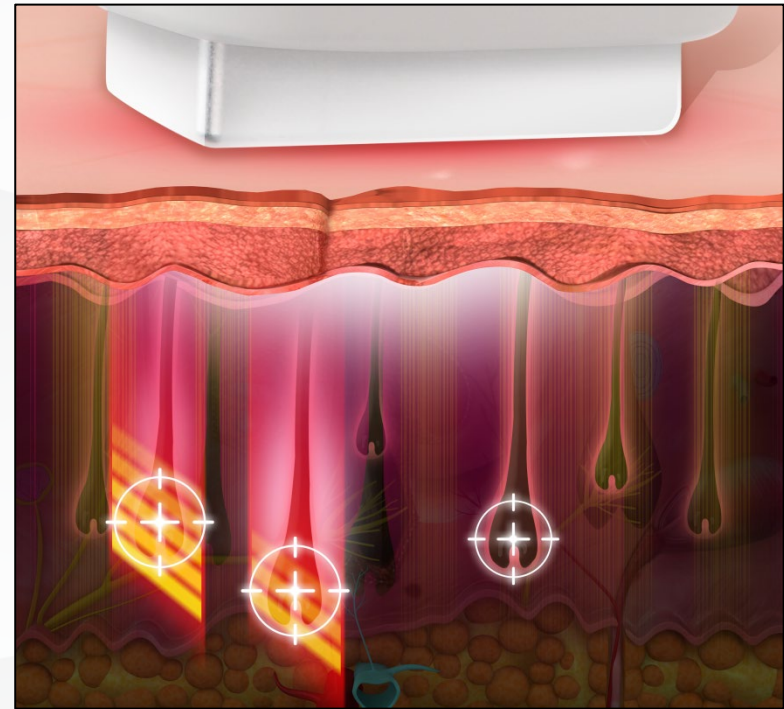
OTHER TECHNICAL FEATURES



LOW FLUENCE



7 PULSES



$6\text{J}/\text{cm}^2 \times 5 \text{ Count} = \text{Total Energy: } 225\text{J}$

Exclusive Multi Pulse Count Mode

Safely deliver high thermal energy to hair follicle thru heat build-up in multi-pulses up to 7 based on relatively low fluence as making 5ms break time between pulses.

Safe and effective treatment for thin and sensitive skin by minimizing the damage of the surrounding tissues

OTHER TECHNICAL FEATURES

Easy Operation



Easy Mode



Pro Mode

Easy and simple application with pre-set parameters

Professional mode for expert

Safety – output power indication



Monitoring improper laser radiation

Avoiding any misuse or unpredictable side effects

Specification



Wavelength	Mixed 755 & 808nm
Power Density	Max. 2,400W/cm²
Laser Fluence	Up to 100J/cm²
Pulse Duration	Min. 3ms ~ Max. 150ms
Spot Size	15X10, 15X20, 15X30, 15X40, 15X50(mm)
Electrical Power	100-240VAC, 50/60Hz, 1.3kVA
Dimension(mm)	691(W) X 1260(H) X 343(L)
Weight	Approx. 60Kg
Protection Type for Electric Shock	CLASS 1 / Type B
Degree Against Electrical Shock	Safety Class IV Laser product to IEC60825-1(2014)



CLINICAL EVALUATION

Clinical Evaluation

Photos courtesy of Pishro Teb Persia

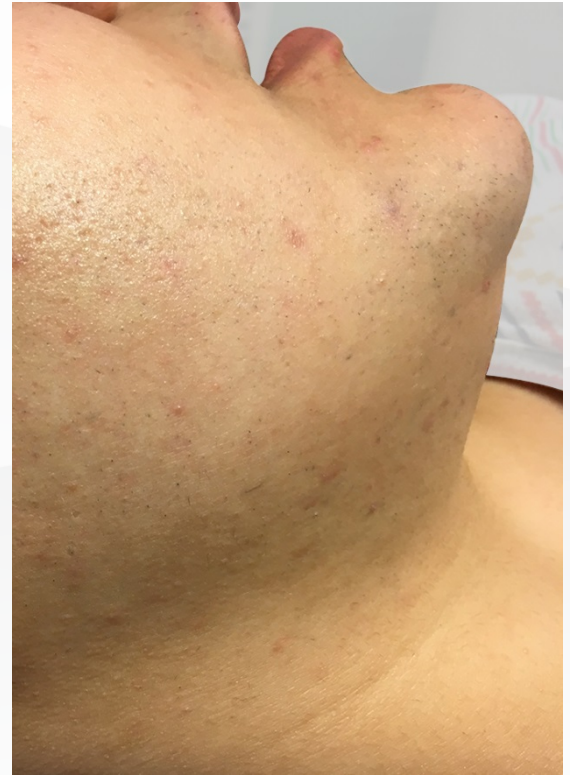


Before tx



After 1st tx

fluence : 22 | pulse duration : 11



After 2nd tx

fluence : 26 | pulse duration : 13