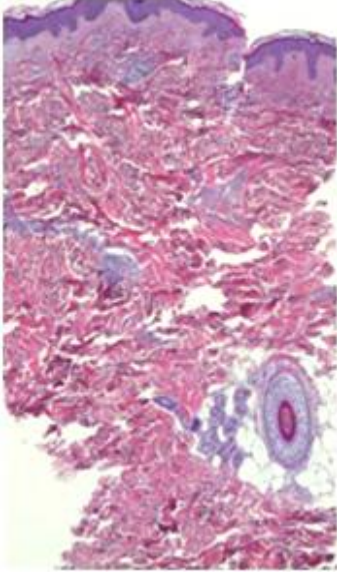
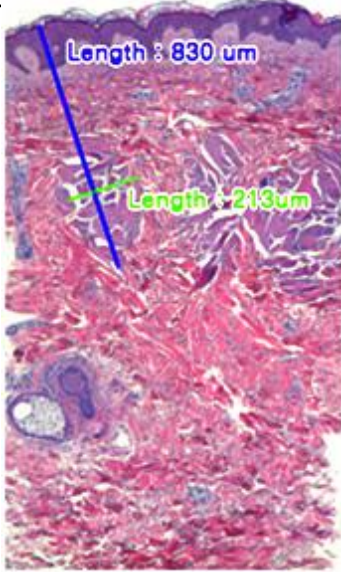
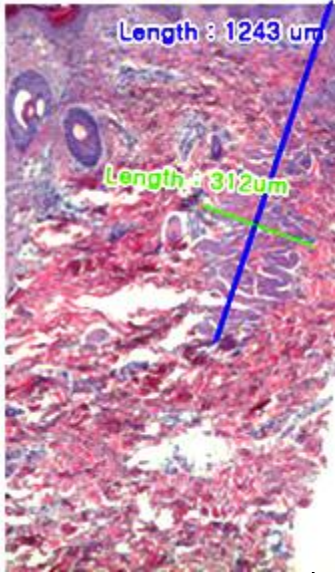
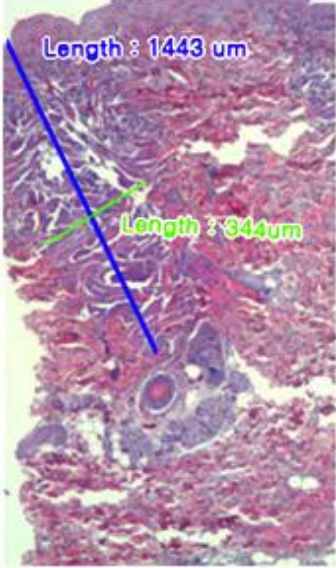
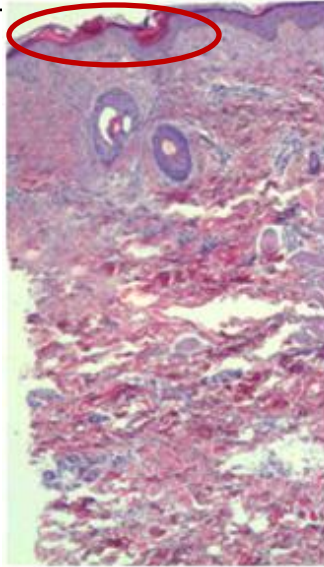
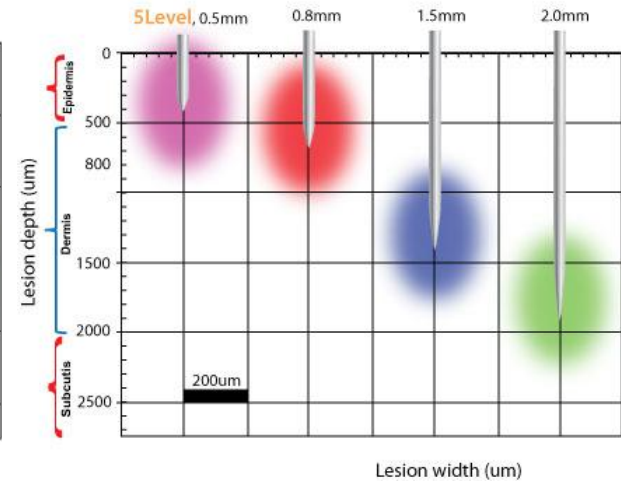
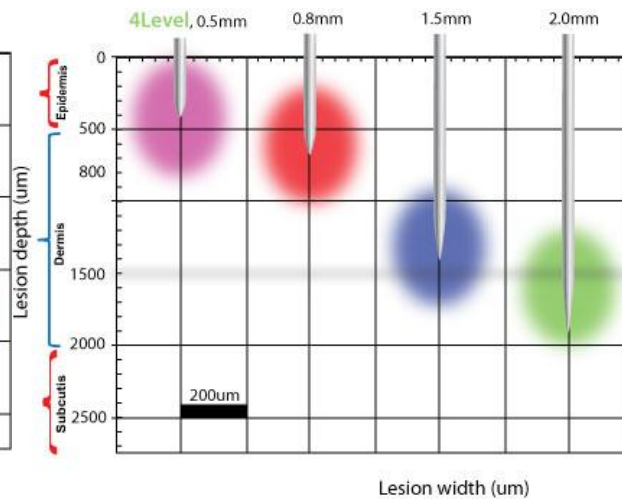
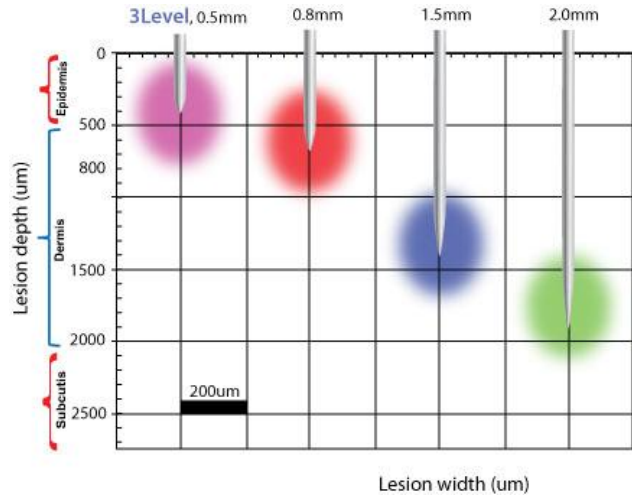
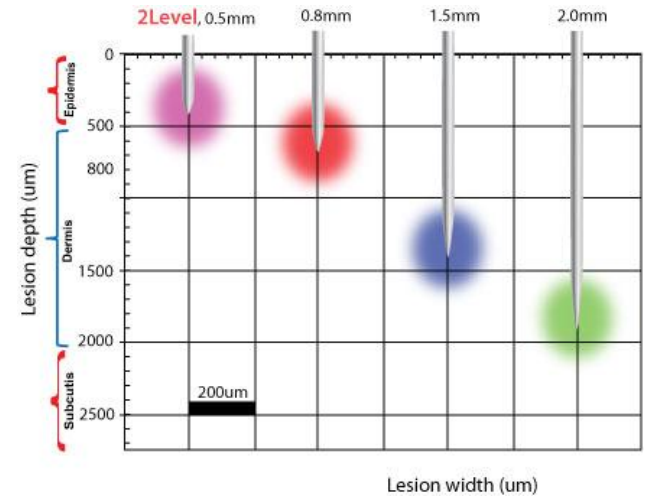
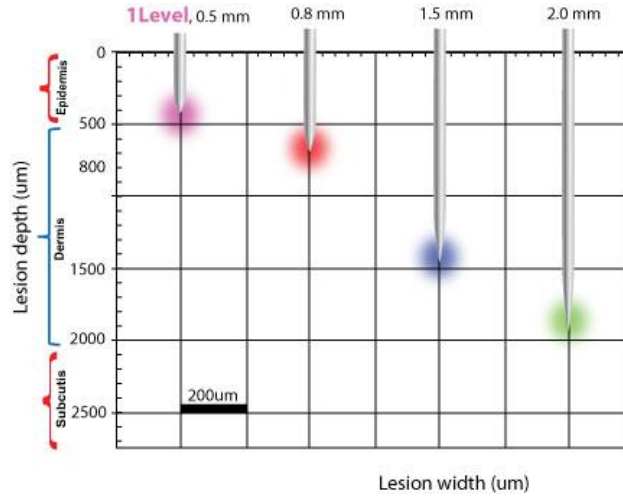


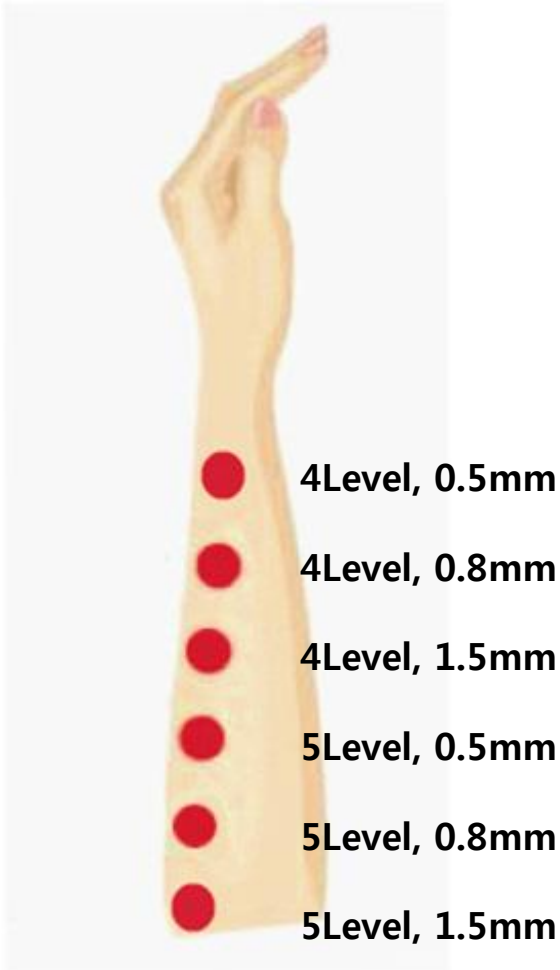
# Tissue Denaturation by Level and Depth

Mode	INTRAcEl Bipolar				
Level	1Level	2Level	4 Level	5 level	5 level
Depth	0.5mm	0.8mm	1.5mm	1.5mm	0.5mm
					
	depth : 502 um width : 190 um	depth : 830 um width : 213 um	depth : 1243 um width : 312 um	depth : 1443 um width : 344 um	It's possible to make a carbonization on the epidermis
down time	1 day	1~2 days	2~3 days	3days	3~4days

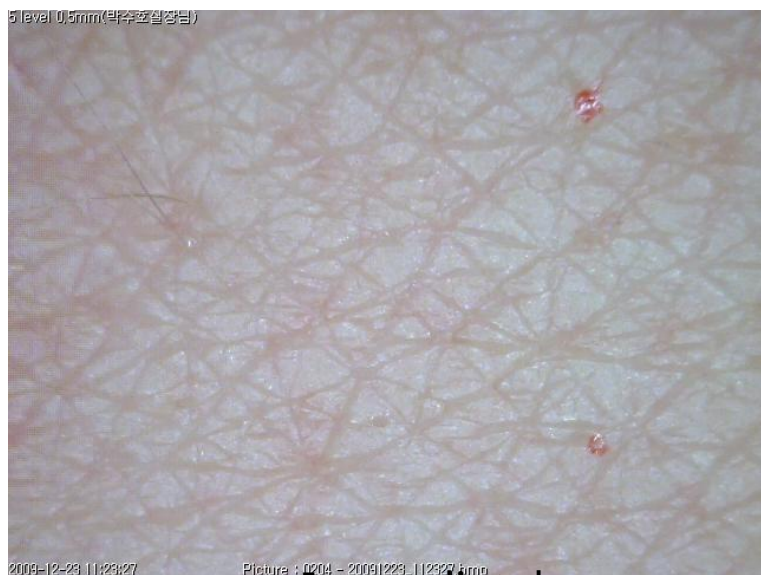


# Clinical Test

Time points	Depth (mm)	shots	Level
Immediately	2.0	1 shot	4 Level 5 Level
	1.5		
	0.8		
	0.5		



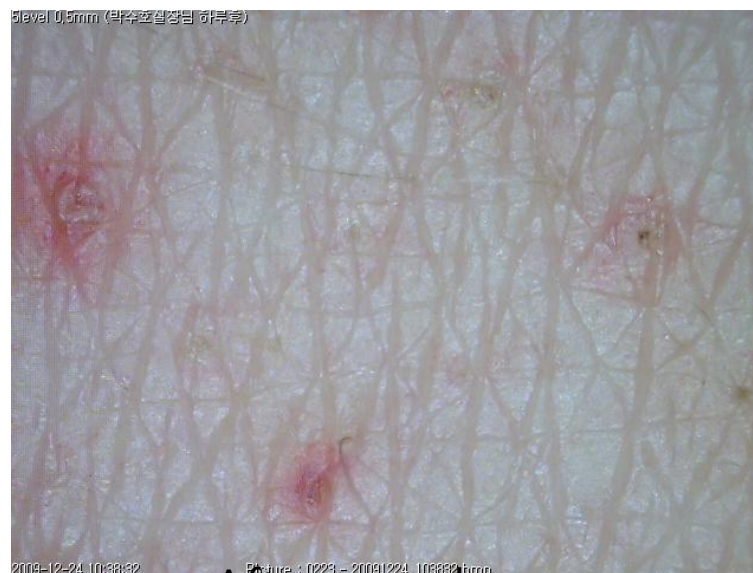
5 Level, 0.5mm



Immediately

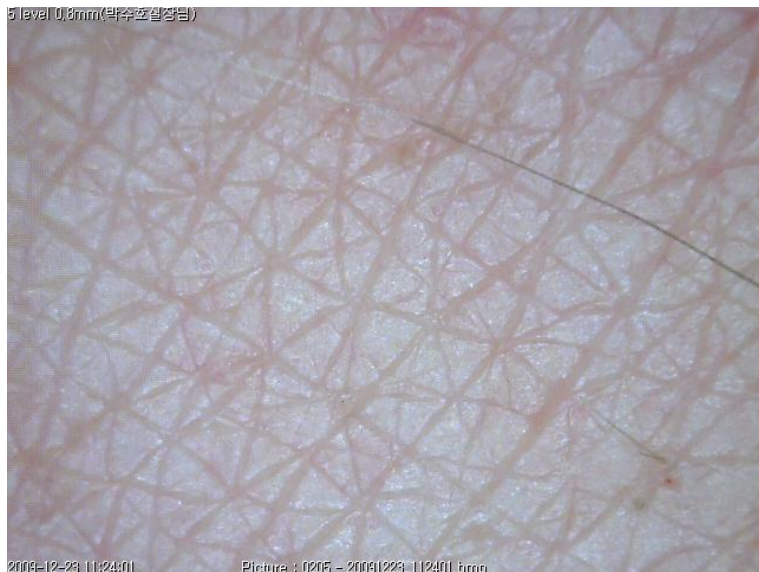


After 4 hours



After one day

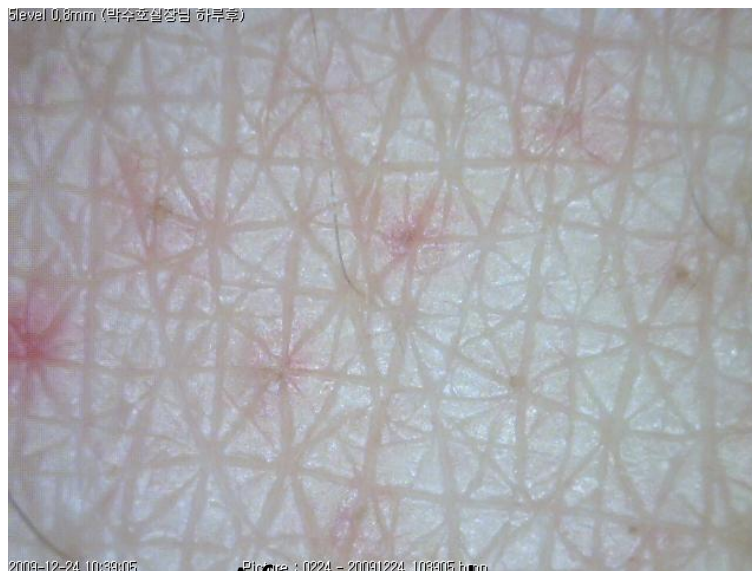
# 5 Level, 0.8mm



Immediately

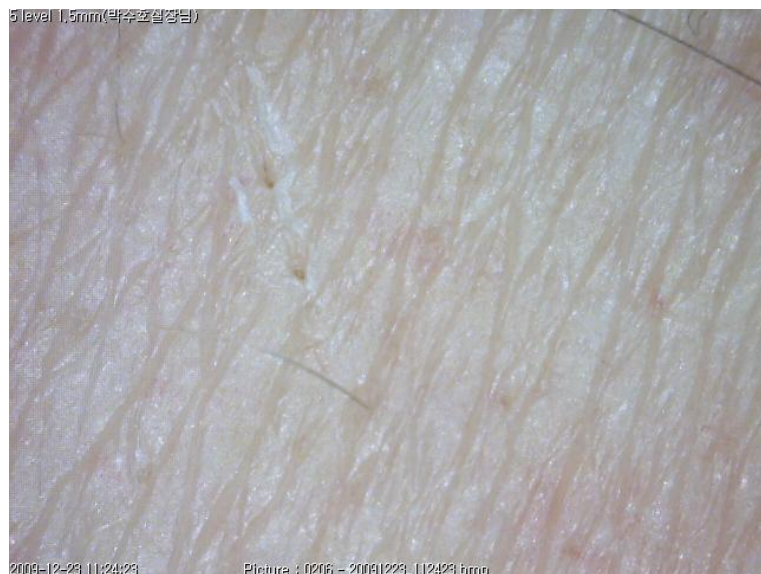


After 4 hours

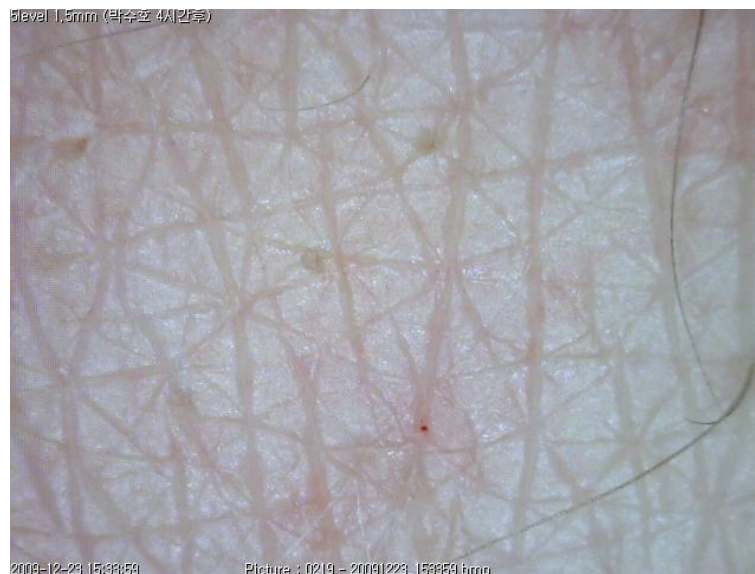


After one day

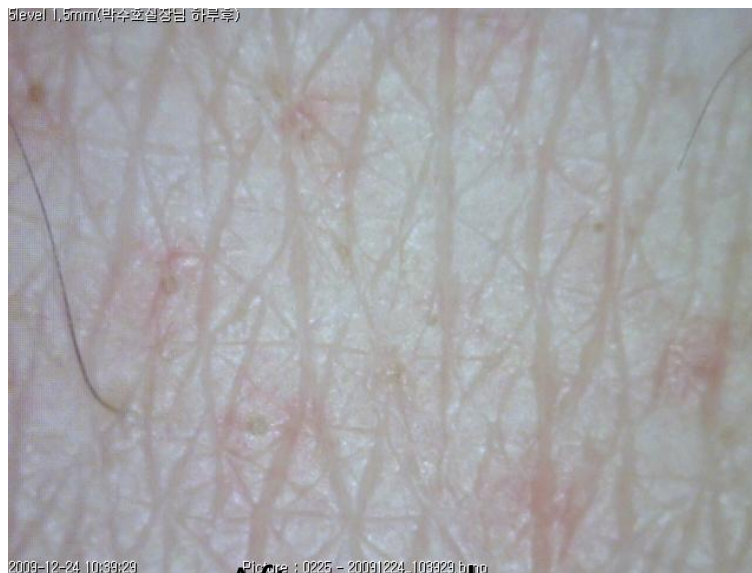
# 5 Level, 1.5mm



Immediately



After 4 hours



After one day

## Recommended Parameter(Level/Depth)

Application <sup>↵</sup>	Level <sup>↵</sup>	Needle Depth (mm) <sup>↵</sup>
Acne <sup>↵</sup>	Level 3 <sup>↵</sup>	0.8mm ~ 1.5mm <sup>↵</sup>
Scar <sup>↵</sup>	Level 3 <sup>↵</sup>	Whole face area 1pass with 0.8mm <sup>↵</sup> Lesion area 1.5mm <sup>↵</sup>
Pore <sup>↵</sup>	Level 3 <sup>↵</sup>	Whole face area 1pass with 0.8mm <sup>↵</sup> Lesion area 1.5mm <sup>↵</sup>
Lifting <sup>↵</sup>	Level 2~3 <sup>↵</sup>	Whole face area 1pass with 0.8mm <sup>↵</sup> Lesion area 1.5mm for <u>Nasolabial fold</u> <sup>↵</sup> Lesion area 1.5mm for jaw line <sup>↵</sup> Lesion area: 0.8~1.5mm for <u>glabella wrinkles</u> <sup>↵</sup>
<u>striae distensae</u> <sup>↵</sup>	Level 2~3 <sup>↵</sup>	0.8~1.5mm (While using 0.8mm depth, push the handpiece enough in order for needles to be inserted properly) <sup>↵</sup>
Wrinkled neck <sup>↵</sup>	Level 3 <sup>↵</sup>	0.8~1.5mm <sup>↵</sup>
Deep Scar <sup>↵</sup> Burn Scar <sup>↵</sup>	Level 3~4 <sup>↵</sup>	1.5mm <sup>↵</sup>

- As per your need, you can do a treatment on the level of 4~5(In this case, over 1.5 depth to be needed)
- Level of RF power and the depth of needles can be changed by the type of skin.

## Recommended Parameter(Level/Depth)



### Nasolabial Fold ↵

After doing first treatment on whole face area in 2~3 levels and 0.8 depth, following treatment should be done on the Nasolabial Fold in 1.5 depth for 1~2 times. ↵



### Jaw line ↵

After doing first treatment on whole face area in 2~3 levels and 0.8 depth, following treatments should be done on the Nasolabial Fold in 1.5 depth for 1~2 times. ↵



### Above mouth ↵

Treatments should be done by level 2 with 0.8mm for two times. ↵  
In this case, don't treat lips to avoid PIH. ↵